



Reference Guide



Copyright 2002, IntelliTools, Inc.

Some Important *IntelliPics Studio* Features

<u>Feature</u>	<u>Comments</u>
Palettes	<ul style="list-style-type: none"> Palettes (of one or more items) can be imported from <i>IntelliTalk</i>[®] II and <i>IntelliMathics</i>[®].
Items	<ul style="list-style-type: none"> Items can be pasted on the page from the Picture Library, or inserted by clicking a palette item or selecting Insert Picture from the Edit menu. Items can have Pictures, Actions, Attributes, Sounds, and Frame Animation. [Ctrl]+click an item to display a Properties dialog box and select options for scanning, locking, layering (-100 to +100), Respond to Mouse Clicks, and other features.
Display/View Options (Modes)	<ul style="list-style-type: none"> Documents can be displayed in 1 of 4 modes: Explore, Design, Paint, and Slide Show. Different menu options and tools are available in and applicable to each mode.
1. Explore Mode	<ul style="list-style-type: none"> This mode is for presenting cause and effect, early learning activities and IntelliQuizzes. Only one page displays. Paint and Design features are not available. <i>IntelliPics</i> files that you import into <i>IntelliPics Studio</i> will open in Explore mode.
Import <i>IntelliPics</i> File	<ul style="list-style-type: none"> Select this File menu option to import files created using previous version of <i>IntelliPics</i>. Imported files can be edited and modified.
2. Design Mode	<ul style="list-style-type: none"> In Design mode, picture items appear as manipulatives on the screen that can be locked, layered, scanned, sized, and/or colored.
Design Tools	<ul style="list-style-type: none"> Include: Select Tool, Line Tool, Text Tool, Straight Line Tool, Oval Tool, Rectangle Tool, Button Tool (see listing below), Region Tool (see listing below).
Button Tool	<ul style="list-style-type: none"> Creates a button on a page that can be labeled with a picture and be assigned actions (e.g., Play Quiz, Play Sounds, navigate to another page of the document, etc).
Region Tool	<ul style="list-style-type: none"> Creates a displayed or a hidden area on the page into which items can be inserted (Design mode) or that can be colored in (Paint mode). Useful for switch users or early learners.
3. Paint Mode	<ul style="list-style-type: none"> In Paint mode, picture items appear as stamps placed onto the background. (You can create your own stamps using the Marquee Tool and Make Item from Selection.)
Paint Tools	<ul style="list-style-type: none"> Include: Brush, Eraser, Fill Tool, Marquee Tool.
4. Slide Show Mode	<ul style="list-style-type: none"> Allows you to present the pages of a document as you would project a series of photographic slides—one at a time in a predetermined sequence—and the user cannot interact with what is displayed on-screen. <i>IntelliPics Studio</i> Player can show activities in Slide Show mode.
IntelliMation	<ul style="list-style-type: none"> This feature allows you to create a path animation on a page. You can animate a graphic, frame animation, or button, using the IntelliMation time line and other tools (resize, rotate, flip, and/or color).
IntelliQuiz	<ul style="list-style-type: none"> An IntelliQuiz is a pre-formatted activity that you can customize and include in any <i>IntelliPics Studio</i> document. Each IntelliQuiz is an interactive quiz session that includes one or more questions for the user to answer, or tasks for the user to perform. A document can include multiple quizzes.
Pages Menu	<ul style="list-style-type: none"> Activities can have many pages. Pages can be added, duplicated, or deleted using the Sort Pages option in the Pages menu.

Options Menu	<ul style="list-style-type: none"> • Use Settings and General Preferences menu options to customize a document or to select program features.
Help Menu	<ul style="list-style-type: none"> • Use this Menu to directly visit the IntelliTools Web site (if connected to Internet) and to search the ReadMe file for FAQ and additional items.
Multimedia File Formats	<ul style="list-style-type: none"> • Image Files: GIF, JPG/JPEG, DIB, BMP, PNG, PICT, WMF(Win) • Sound Files: WAV, AIF, MP3, SND (system 7 MAC) • Movie Files: MOV, MPG/MPEG, AVI, SWE (Win)

Page Layers

A viewer looking at a document sees single pages. However, each page of a document actually consists of two layers:

Design layer – the foreground of the page. It is analogous to a transparent sheet positioned in front of the Paint layer. The Design layer of a page can contain an assortment of objects. Objects are selectable and have properties. Objects include:

- Buttons.
- Pictures and frame animations from the Picture Library (the pictures assigned to items in the Item Library).
- Pictures inserted from other sources.
- Movies.
- Text boxes.

Paint layer – the background of the page. It is analogous to a painter’s canvas.

To create multimedia activities, you work with one or both page layers. It is easy to switch from one layer to another by selecting Paint or Design from the View menu. The Paint layer of a page can contain an assortment of non-interactive elements:

- Paintings.
- Stamps.
- Background images and background patterns.
- Objects from the Design layer that have been “fixed to background” (and thus lose their editable object properties).

Button(s)

Clicking a button allows a user to interact with the activity, perform a task, or operate the program without leaving the page. Like items, each button can have a number of properties. Button properties include:

- Name – the text that represents the button in the IntelliPics Studio Item Library (Items in Document category) and that can be displayed on-screen.
- Picture – the image that represents the button in the IntelliPics Studio Item Library and that can be displayed on-screen.
- Actions – what the button does when selected. A button can have a single action or a series of actions associated with it.
- Sound – the audio that plays when the button is selected.

Buttons are created by the activity designer using the Button Tool. A button is initially created on one page of a document. Once a button is created, it can be copied to other pages. Buttons can have various appearances and can even be customized with a picture to be part of the scene displayed on a page. One button style, transparent, makes any underlying image appear interactive—a very useful design feature. For example, on a map included in a geography activity, a country could be covered by a hidden button. A student could click the country and initiate a button action, such as play a movie about that nation. Buttons can even move across a page as part of an animation sequence.

IntelliPics Studio Actions

<p><u>Colors</u></p> <p>Color Black Color Olive Color Blue Color Orange Color Blush Color Pink Color Brown Color Purple Color Buff Color Red Color Burnt Orange Color Silver Color Forest Green Color Sky Color Glass Color Sunshine Color Grass Color Tan Color Gray Color Teal Color Green Color Tomato Color Lavender Color Violet Color Light Blue Color White Color Lime Color Yellow Color Marigold Color Maroon Color Navy</p> <p><u>Design</u></p> <p>Brush/Line Width #1 Brush/Line Width #2 Brush/Line Width #3 Brush/Line Width #4 Brush/Line Width #5 Button Tool –create onscreen button Copy to Background – keeps objects Design – switches to Design mode Erase Background – (Design) Fix to Background Line Tool – (Design) Oval Tool – (Design) Rectangle Tool – (Design) Select All – (Design) Select Tool Set Fill Color Set Line Color Solid Fill Straight Line Tool Text Tool</p> <p><u>Explore</u></p> <p>Customize Caption... Explore Hide Caption Hide Typing Window Show Caption Show Typing Window</p>	<p><u>Formatting (Text)</u></p> <p>Bold...(toggle or on/off) Italic...(toggle or on/off) Larger Plain Text Smaller Underline...(toggle or on/off)</p> <p><u>General</u></p> <p>Clear Close Copy Cut Document Settings – opens setting dialog box Duplicate Selection Edit Palettes New Open File Open URL...(Web site) Open Paste Picture Library Print Properties – opens dialog box of current selected object Quit Repeat – Save as Slide Show Save Select Object....(enter item name)</p> <p><u>Insert</u></p> <p>Insert as Background – fills screen Insert Item Insert Movie –(must lock to play, .mov, .avi format) Insert Picture – (creates palette item, pict,bmp,gif format)</p>	<p><u>IntelliMation</u></p> <p>Create IntelliMation Play IntelliMation Remove IntelliMation Remove IntelliMation Time Set IntelliMation Time... Stop Reading/IntelliQuiz/Slideshow</p> <p><u>Items</u></p> <p>Insert Item Select Item....(use Item name)</p> <p><u>Library</u></p> <p>Hide Picture Library Select Category (within Picture Lib) Show Picture Library Toggle Picture Library – (show/hide)</p> <p><u>Modify</u></p> <p>Apply Custom Color... Apply Movement Apply Number Bring Forward Flip Horizontally Flip Vertically Make Large Make Larger Make Largest Make Medium Sized Make Small Make Smaller Make Smallest Rotate Clockwise Rotate Counterclockwise Send Backward</p>
--	---	--

Pages

Delete Page
Duplicate Page
Go to Page...
New Page
Next Page
Page Properties
Play IntelliMation
Previous Page
Record Page Sound
Sort Pages

Paint

Brush
Brush/Line Width #1
Brush/Line Width #2
Brush/Line Width #3
Brush/Line Width #4
Brush/Line Width #5
Erase All
Eraser
Fill Tool
Marquee Tool
Paint
Undo

Palettes

Draw Randomly From...
Hide All Palettes
Hide Palette...
Pick Randomly From...
Show Palette...
Switch to Palette....
Toggle Palette...(Show/hide)

Play

Play IntelliMation
Play IntelliQuiz
Play Movie
Play Slide Show
Play Sound
Stop Reading/IntelliQuiz/SlideShow

Reading

Read All
Read Paragraph
Read Paragraph and Advance
Read Selection
Read Sentence
Read Sentence and Advance
Read Word
Read Word and Advance
Spell Current Selection
Stop Reading/IntelliQuiz/SlideShow

Speech

Remember Speech Settings
Restore Speech Settings
Select Voice...
Speak Text
Voice Speed

Typing

Type Backspace
Type Caps Lock
Type Down Arrow
Type Enter(Win only)
Type Latching Shift
Type Left Arrow
Type Page Down
Type Page Up
Type Return(Mac only)
Type Right Arrow
Type Space
Type Tab
Type Text...(enter specific text)
Type Up Arrow

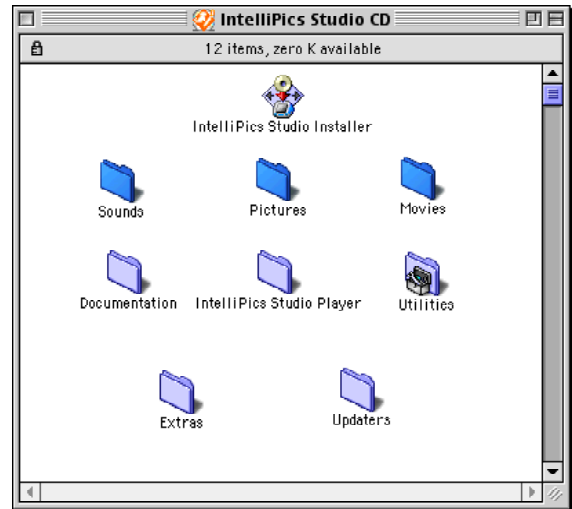
IntelliPics Studio CD Contents

IntelliPics Studio CD

The *IntelliPics Studio* CD includes many resources.

IntelliPics Studio requires significant space on the hard drive. The installer will install almost 200 MB of templates and activities that help users quickly see the wonderful potential of this product.

In addition, there are almost 2000 resources on the CD that do not get installed. These include pictures, movies, and sounds to enhance the custom activities that users can create. These resources may be copied from the CD as needed.



The IntelliPics Studio Player

IntelliPics Studio Player provides all of the *IntelliPics Studio* program menu options needed to use the sample activities on the *IntelliPics Studio* CD or to use any activity that you create and want to share. Player users can save and/or print documents, change speech features, set various alternative access options, and more!

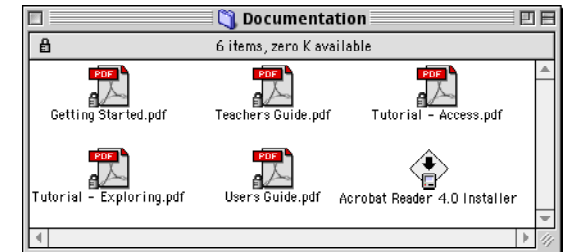
Downloading Players

IntelliTools Players can also be downloaded for no charge from the IntelliTools Web site:
(www.intellitools.com/downloads/).



Documentation Folder

The Documentation folder contains the User's Guide, Teacher's Guide, information on installing the program, and the step by step tutorials to help you learn the features, activities, and authoring capabilities of *IntelliPics Studio*. These PDF files can be printed and used for reference and in training.



IntelliPics Studio CD Contents (continued)

Utilities Folder

When you purchase *IntelliPics Studio*, the CD will install the program into either a Macintosh or Windows system. The files you create can be opened on either a Macintosh or Windows system.

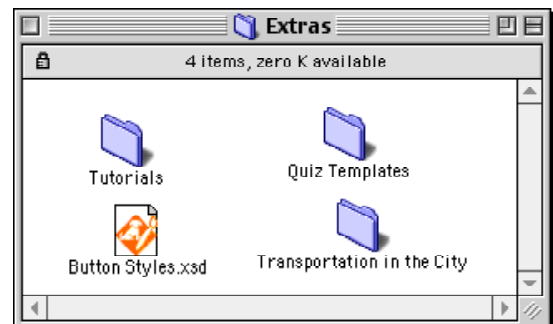
IntelliTools Converter – Overlays created on a Macintosh must first be converted before they can be used on a Windows system. Inside the Utilities folder is *IntelliTools Converter*. This application will convert the Macintosh overlays to Windows format, and they can then be transferred and used on the Windows system. (This will also convert *IntelliPics* files into Windows format)

Overlay Printer – Even if you don't own *Overlay Maker*, using *Overlay Printer*, you can print overlays that have been created to use with activities. Overlays cannot be edited or modified without *Overlay Maker*, but they can be printed, shared, and used on IntelliKeys.



Extras

The Extras folder contains files to show users more about Quizzes and other features found in *IntelliPics Studio*. There is also a sample activity that shows a creative use of QuickTime.



Updaters

Upgrades are being made to all IntelliTools programs on an ongoing basis. Because *IntelliPics Studio* is part of the IntelliTools Classroom Suite, the palettes and items used in *IntelliTalk® II*, *IntelliMathics®*, and *IntelliPics Studio* can be shared between each program. Therefore, the *IntelliPics Studio* CD includes updaters to these programs. It is recommended that users update to the latest version of the software. These updaters can also be downloaded from the IntelliTools Web site.

